



PRODUCT DESCRIPTION

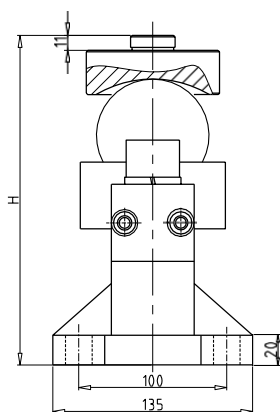
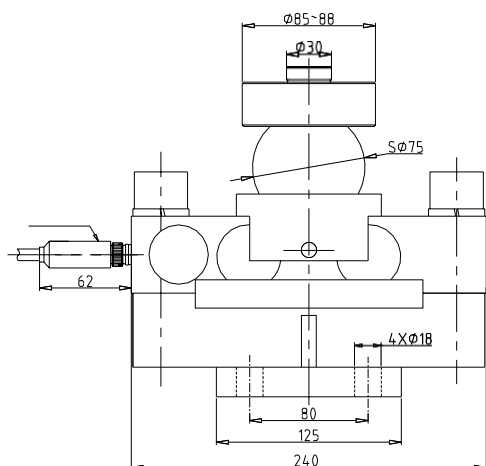
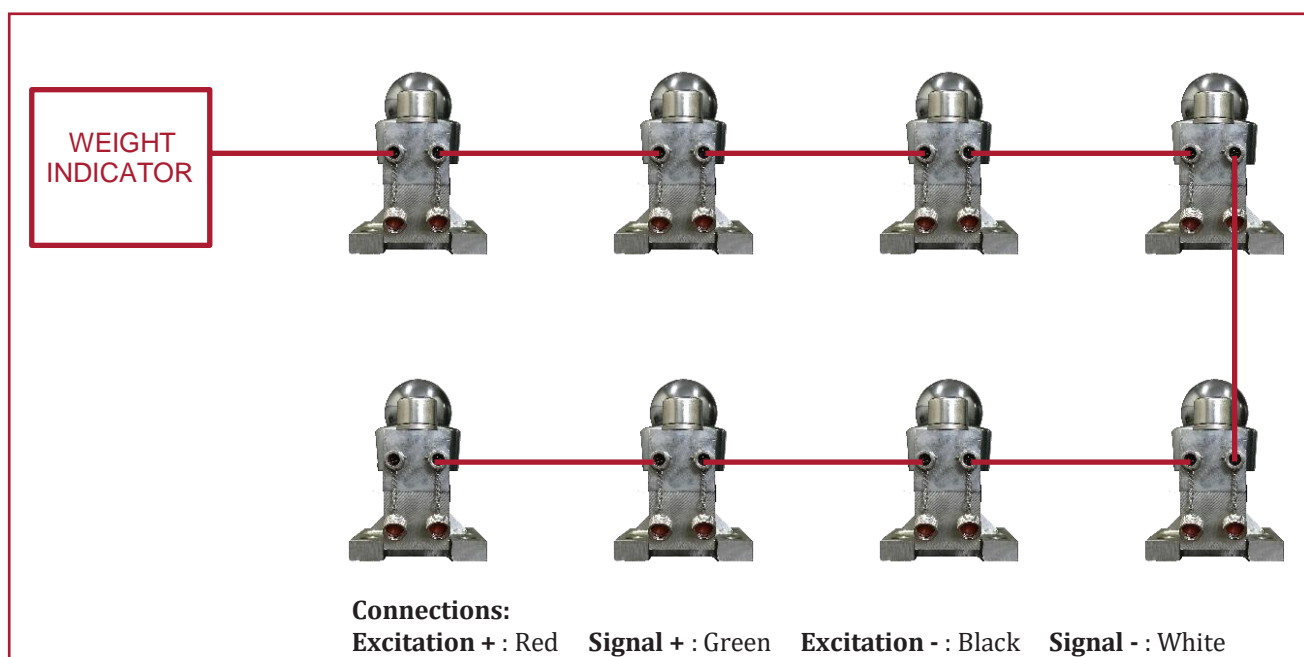
The Digi Weigh Digital loadcells QSWD are cup ball type double ended shear beam loadcells, that can be connect without any junction box. These are pre-calibrated from standard weights and are capable of transmitting direct weight output in digital form. Network type cabling ensures easy installation.

KEY FEATURES

- Dual air plug facilitates easy cabling and fast installation
- No need of junction box.
- Rodent proof cable ensures long life
- Corner correction not required*
- No Calibration required
- No signal attenuation from external environment
- Better Accuracy
- Long Distance signal communication between weighbridge room and structure (Up to 200 mt)
- Built In Surge protection
- Superior finish with superior cable
- No chance of Signals manipulation
- Very simple & easy installation procedure
- Easy field replaceability
- Cost Effective

*Level of structure should be proper on loaded and empty conditions.

EASY INSTALLATION ARRANGEMENT



Rated Load	10-30 t	40 t
H(mm)	223.2	229.2

TECHNICAL SPECIFICATION

Rated Capacities	10t, 15t, 20t	25t	30t	40t
A/D Module Resolution	20000	25000	30000	40000
Baud Rate	9600 BPS			
Combined Error	$\pm 0.02\%$ F.S.			
Creep Error (30 min)	$\pm 0.02\%$ F.S.			
Temperature Error	$\pm 0.02\%$ F.S./ 10°C			
Temperature Range	-30 to $+70^{\circ}\text{C}$			
Zero balance	$\pm 0.1\%$ F.S.			
Safe Overload	150 % F.S.			
Protection Class	IP68			
Input Voltage	9 to 12 V DC			
Max Input Voltage	20 V DC			
Signal Transmission distance	200 Mtr			